

INOXIHP
ABOUT USING WATER



PF 400

Reciprocating Horizontal
Quintuplex Plunger Pumps



PF 400



General features

- Compact dimension
- Low noise
- Forced lubrication system
- Easy maintenance
- Low maintenance costs
- Internal double reduction gears with helical gears
- Input shaft can be placed on either side of the pump
- Self-adjusting seal packing
- Available with carbon steel or stainless steel hydraulic head
- Low vibrations
- Constant hydraulic flow with minimal pulsation: no pulsation dampener required

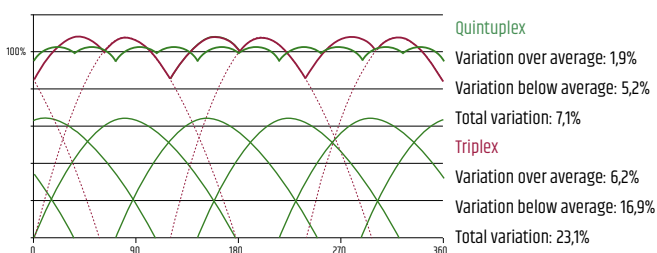
Accessories

- Valve lifter controlled by means of pneumatic solenoid
- Regulating pressure valve
- Unloading valve
- Pressure-relief valve
- HP check valve
- Suction and/or delivery gauge
- Low and high pressure switches
- Simplex or duplex suction filter
- Manifold groups for suction/delivery

Applications

- Descaling system
- Disk saw cooling
- Hydrostatic bearing lubrication
- Press drive
- Hydraulic testing
- Coal mining
- Industrial cleaning
- Spunlace
- Deburring

Pulsation diagram



Identification code

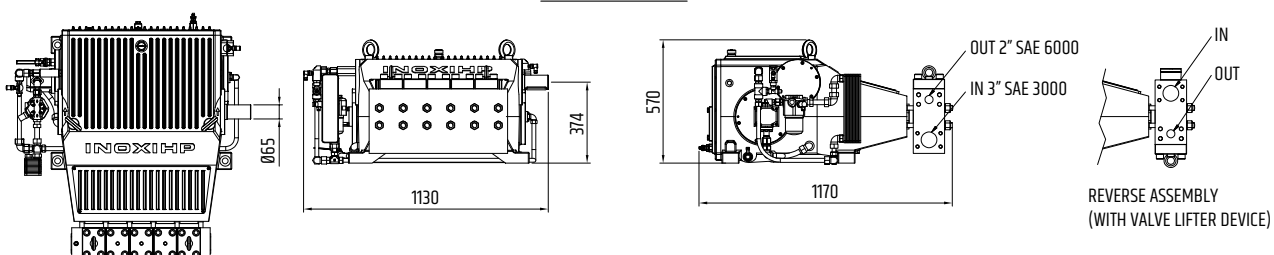
see tables on the next page >>>

PF	400					
SIZE	SHAPE	RATIO	Ø PLUNGER	HYDRAULIC HEAD MATERIAL	LUBRICATION	
400	STD	L	30(1)	S Carbon steel	4A	Forced + water heat exchanger
401	SX	M	35(1)	D Standard Stainless steel	4B	Forced + air heat exchanger
		V	40	X HR Stainless steel	6A	Independent Forced lubrication + water heat exchanger
			45		6B	Independent Forced lubrication + air heat exchanger
			50			
			55			
			60			
				HYDRAULIC HEAD VERSION	(1) Available only with Q10-Q11 hydraulic head	
				Q42	NP 420 bar max.	
				Q43	NP 420 bar max. + valve lifter	
				Q10	NP 900 bar max.	
				Q11	NP 900 bar max. + valve lifter	

Dimensions

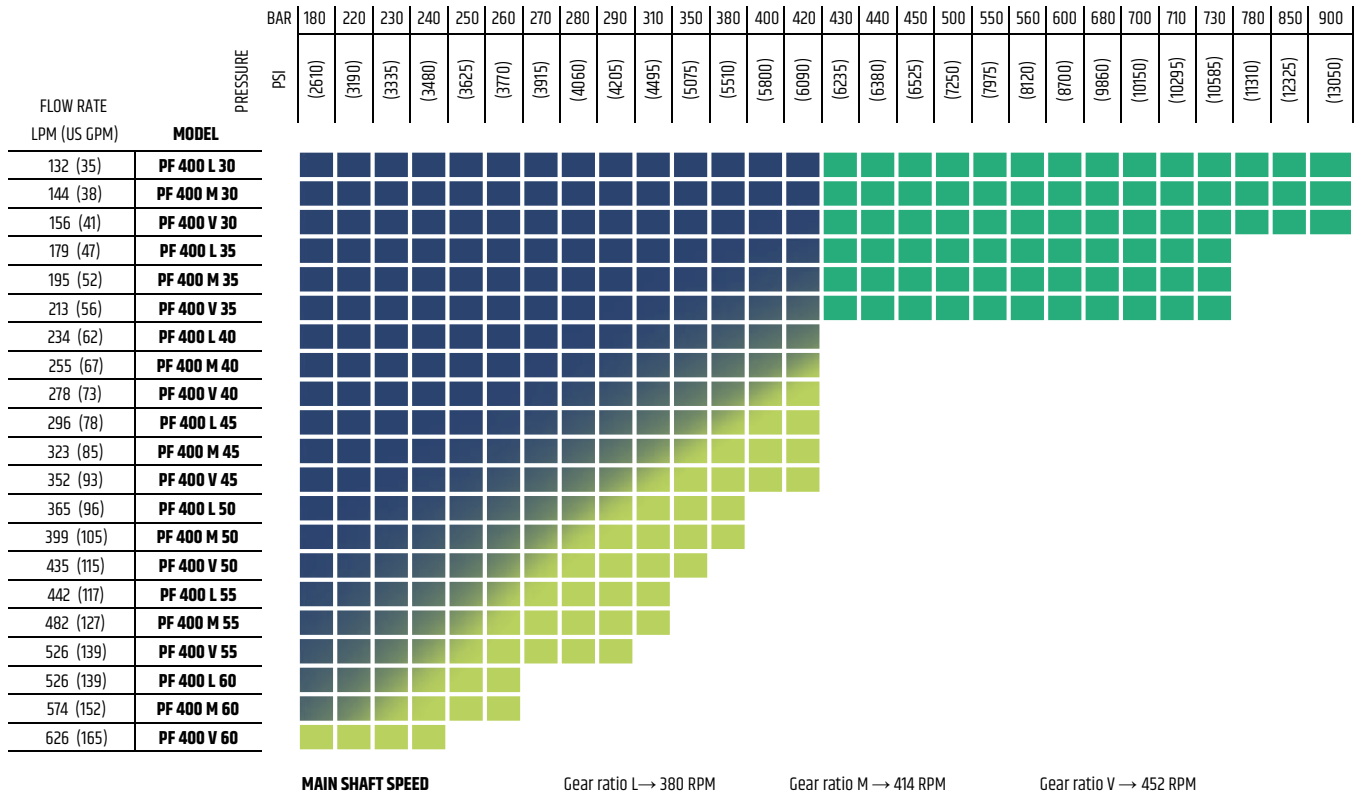
Dimensions are referred to hydraulic head Q42
 Weight: kg 1120

STANDARD ASSEMBLY

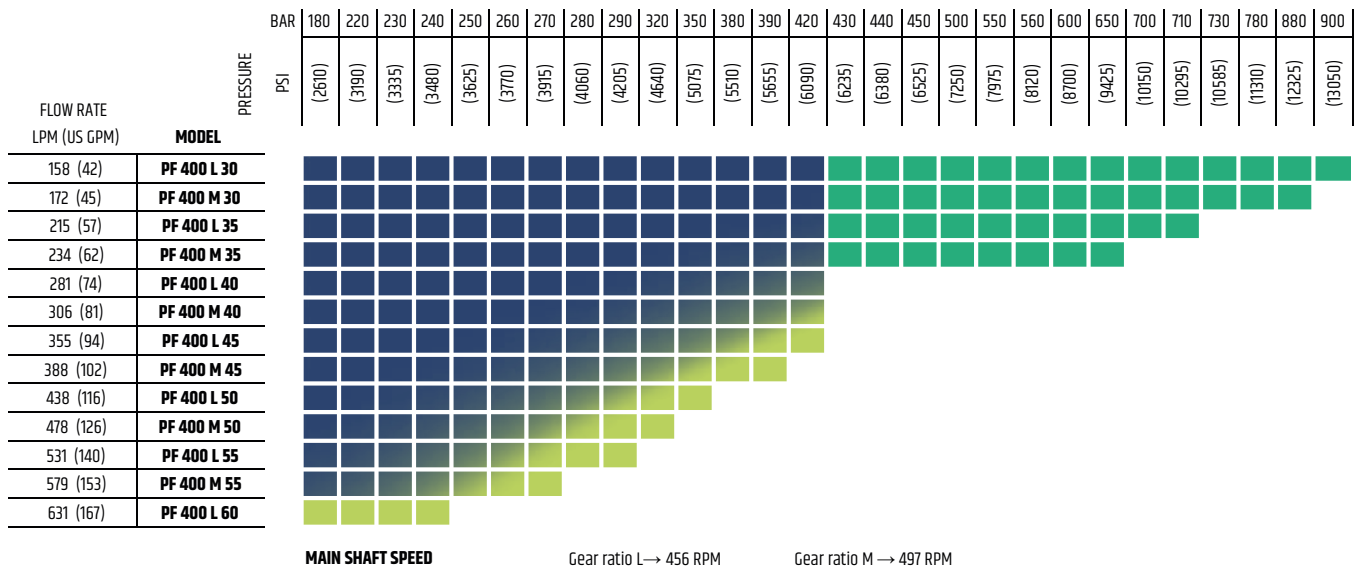


Selection Diagram

PF 400 - 50 Hz 4 POLES ELECTRIC MOTOR (1500 RPM) - MAX ABSORBED POWER 285 kW



PF 400 - 60 Hz 4 POLES ELECTRIC MOTOR (1800 RPM) - MAX ABSORBED POWER 285 kW



Also covered by smaller pump models

Q42/43 Hydraulic head Q10/11 Hydraulic head

1 MPa = 10 bar. The pump performances are referred to a volumetric efficiency of 100% and a mechanical efficiency of 89%, with water at 20°C. Input speed range 900-1800 r.p.m. For performances and uses other than the ones listed in this catalogue, please contact INOXIHP technical office for assistance.

Pumping Group

PF 400



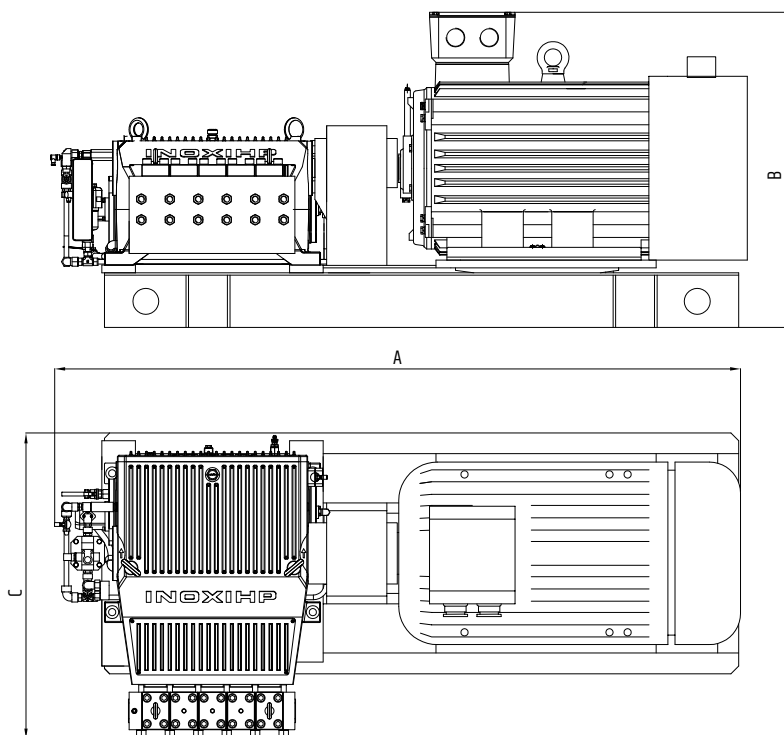
Composed of

- Pump PF 400 with forced lubrication complete with pressure and temperature switches
- Electric motor
- Safety valve
- Coupling with cover
- Pressure gauge
- Frame
- Suction pressure switch
- Flanges

Options

- Manifold groups for suction/delivery
- Junction box
- Suction filters simplex or duplex with/without clogging detection sensor
- Valve lifter controlled by means of pneumatic solenoid
- HP check valve
- Low and high pressure switches
- Simplex or duplex suction filter

Dimensions



POWER (kW)	DIMENSIONS (mm)			WEIGHT (Kg)
	A	B	C	
132	2650	1270	1180	2585
160	2650	1270	1180	2645
200	2650	1270	1180	2760
250	2750	1270	1180	3300
280	2750	1270	1180	3430
315	2750	1270	1180	3535



These pump and pumping group model are EAC certified



INOXIHP S.r.l.

IT - 20834 Nova Milanese (MB) - Via Garibaldi, 89 - Tel: +39 0362 190111
Fax: +39 0362 1901008 - E-mail: inoxihp@inoxihp.com - inoxihp.com

INOXIHP
ABOUT USING WATER